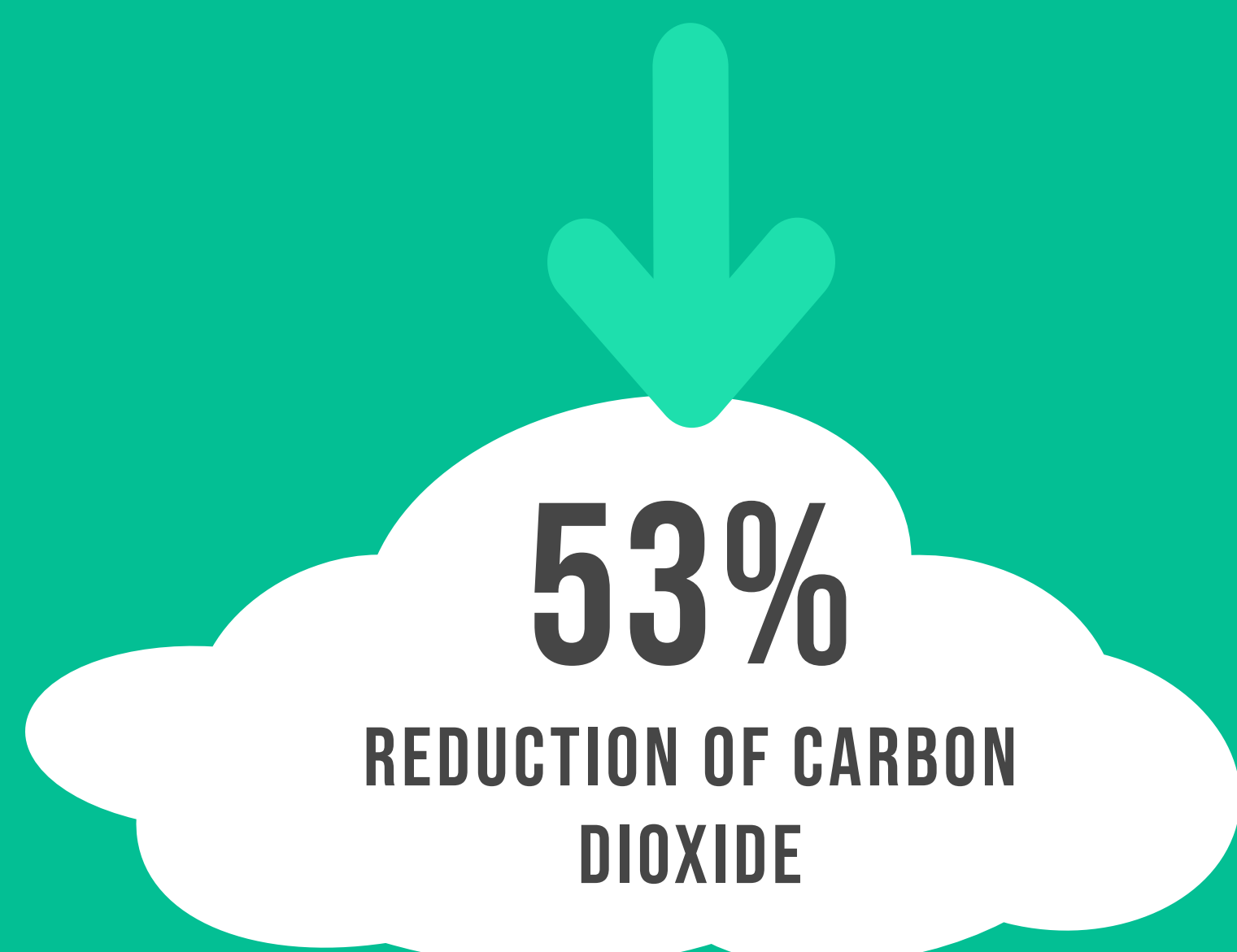




CARING FOR OUR ENVIRONMENT

REDUCING OUR IMPACT ON THE ENVIRONMENT

ENERGY



Successful carbon reduction projects across Buckinghamshire County Council's direct operations have resulted in an impressive 54% reduction in the amount of carbon dioxide produced in 2018/19 compared with the baseline set in 2009/10. This is a significantly better outcome than the 30% national voluntary reduction target set by the UK Government in its Clean Growth Strategy. This also exceeds the County Council's own more ambitious target of 40% and achieves it 2 years early.



LED upgrades to almost 28,000 streetlights have helped reduce energy consumption, as well as delivering lower operational and maintenance costs. The upgrades will generate over £13 million in lifetime savings and are predicted to give annual carbon savings of over 3,100 tonnes each year.

In addition to street lighting upgrades, we have delivered several projects including lighting upgrades, building fabric insulation, building energy management systems, traffic light, heating, motor controls, pipework insulation and IT energy efficiency improvements. Combined, these projects will save over 4,375 tonnes of CO2 per year, and over £900k of annual savings.

COMBINED THESE PROJECTS WILL SAVE

OVER 4,375 TONNES OF
CO2 PER YEAR

OVER £900K OF
ANNUAL SAVINGS



In 2017, we identified 8 county libraries with great potential to benefit from a variety of energy conservation measures. Over a two-year programme, projects relating to these libraries will reduce carbon output by 915 tonnes.

Installation of solar panels at schools and Learning Centres over the past three years will deliver CO2 savings of 250 tonnes per year, this equates to a 13.9% reduction in CO2 emission for electricity usage within the buildings concerned.

REDUCING OUR IMPACT ON THE ENVIRONMENT

WASTE



Households in Buckinghamshire now recycle or compost

OVER
56%

of their waste, among the best in the country.



The Greatmoor Energy from Waste facility produces enough energy to power 40,000 homes. It helps reduce the amount of waste sent to landfill which was less than 1% in 2018/19.



Buckinghamshire County Council also promotes a lot of great local things that help reduce waste, such as three community fridges, re-use shops, repair cafes and numerous 'Plastic Free' groups.

Buckinghamshire's District Councils have a comprehensive recycling service making it easier than ever to recycle more. In 2018/19 Buckinghamshire recycled or composted 153,000 tonnes of residents waste, more than 250kgs per person.



708

people have been prosecuted by our Fly-Tipping Team since 2004

OVER
£1,000,000

achieved in awarded fines and costs

REDUCING OUR IMPACT ON THE ENVIRONMENT

NATURAL ENVIRONMENT

IN PARTNERSHIP WITH THE BUCKINGHAMSHIRE AND MK NATURAL ENVIRONMENT PARTNERSHIP(NEP) WE HAVE:



- Secured biodiversity net gain policies in all the emerging local plans in Buckinghamshire ahead of the mandatory requirement in the forthcoming Environment Bill. The policies are supported by an emerging biodiversity accounting scheme. This means we can provide certainty for developers and ensure that future development in the County delivers biodiversity net gain in line with the DEFRA 25 year Environment Plan, making sure we leave the environment in a better state than when we found it
- Helped produce a map of Green Infrastructure Opportunities in Buckinghamshire and Milton Keynes, and the Vision and Principles for the Improvement of Green Infrastructure in Buckinghamshire
- Produced a State of the Environment Report for Buckinghamshire



We hold and maintain all the natural environment records for Buckinghamshire and Milton Keynes, including information on habitats, species and designated and undesignated wildlife sites (BMERC).



Our Local Wildlife Sites Officer works with local communities and schools to help them manage and improve their local wildlife sites.



We invest in projects to better understand our natural environment in order to inform strategic decision making, for example Natural Capital baseline mapping and recording ancient trees.

REDUCING OUR IMPACT ON THE ENVIRONMENT

COUNTRY PARKS AND RIGHTS OF WAY

OUR COUNTRY PARKS:

1,032,623
VISITORS LAST YEAR

850
ACRES

4
LOCATIONS

95%
CUSTOMER SATISFACTION



Re-creation of vulnerable habitats and species, such as Lowland Heath, Alder Carr, Starfruit.



Management of pests and diseases as well as invasive non-native species (such as Japanese knotweed).



Management of the Site of Specific Scientific Interest (SSSI) recognised by Natural England as the best example of Lowland Heath in Buckinghamshire.



Individual management plans for 'veteran' trees to ensure their long term survival.



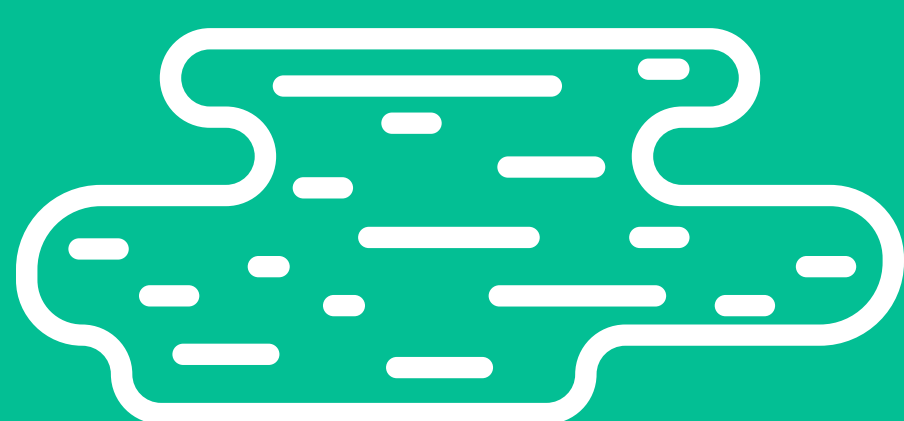
3300 kms (2000 miles) of public footpaths, bridleways and byways maintained. Over £700,000 secured in 18/19 for enhancements to network.

REDUCING OUR IMPACT ON THE ENVIRONMENT

FLOODING



We're active in helping to protect our residents from flooding from extreme weather events, which are associated with climate change. Buckinghamshire County Council has committed over £4m as part of a wider £8m programme of flood alleviation measures to be installed at various vulnerable sites across the County.



Sustainable drainage is beneficial to housing and commercial developments. By promoting the approach of keeping water at the surface, the team helps to ensure that new developments improve the water quality of surface water runoff before it makes its way into the ground or river network.



1,237

sustainable drainage responses on planning applications in 18/19 – a 61% increase on the previous year.

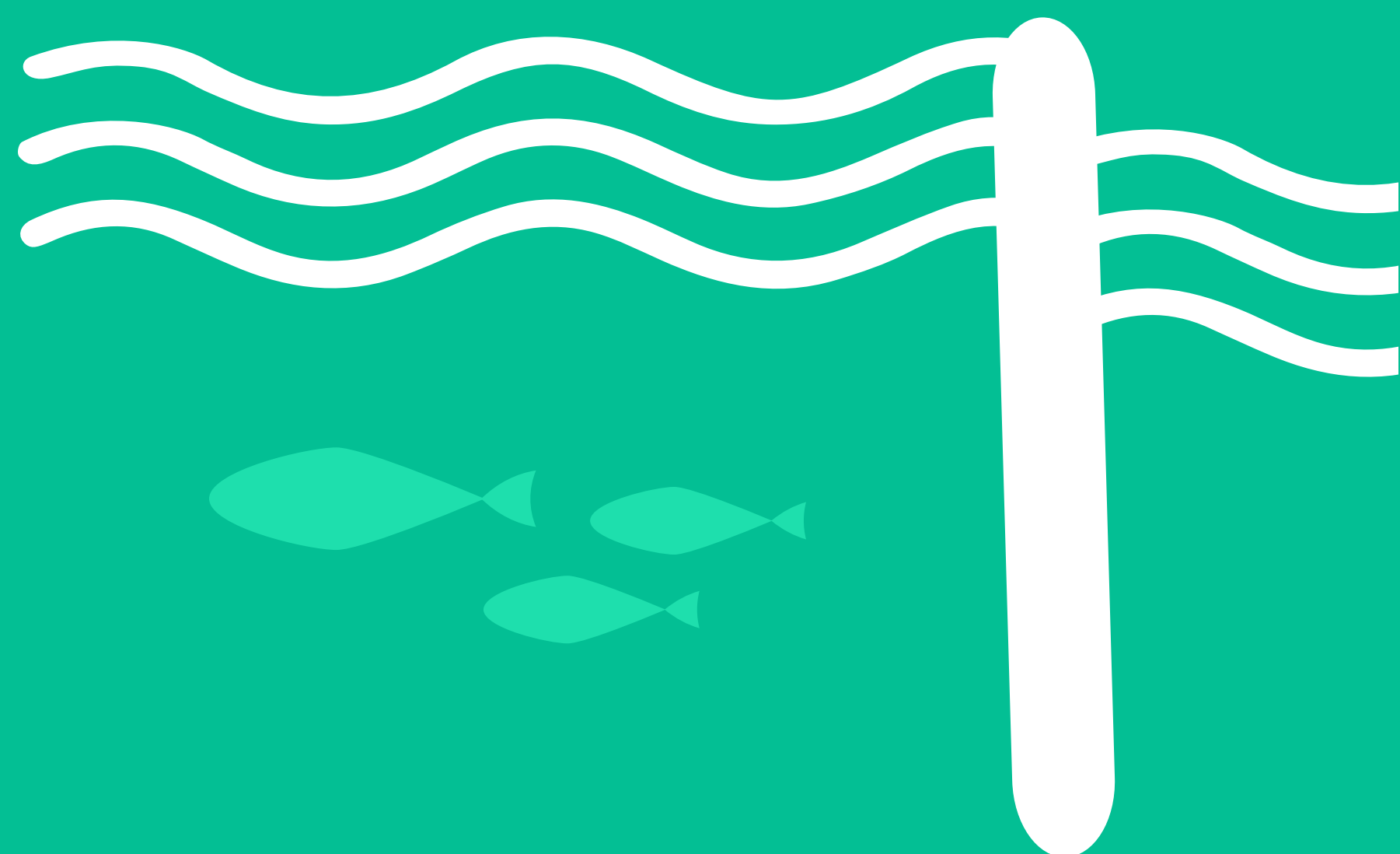


As well as Sustainable Drainage Systems (SuDS) on new developments, we are also investigating opportunities to retrofit SuDS into a community that flooded in 2013/14 to improve resilience.



287

homes protected from flooding with new flood alleviation scheme in Marlow.



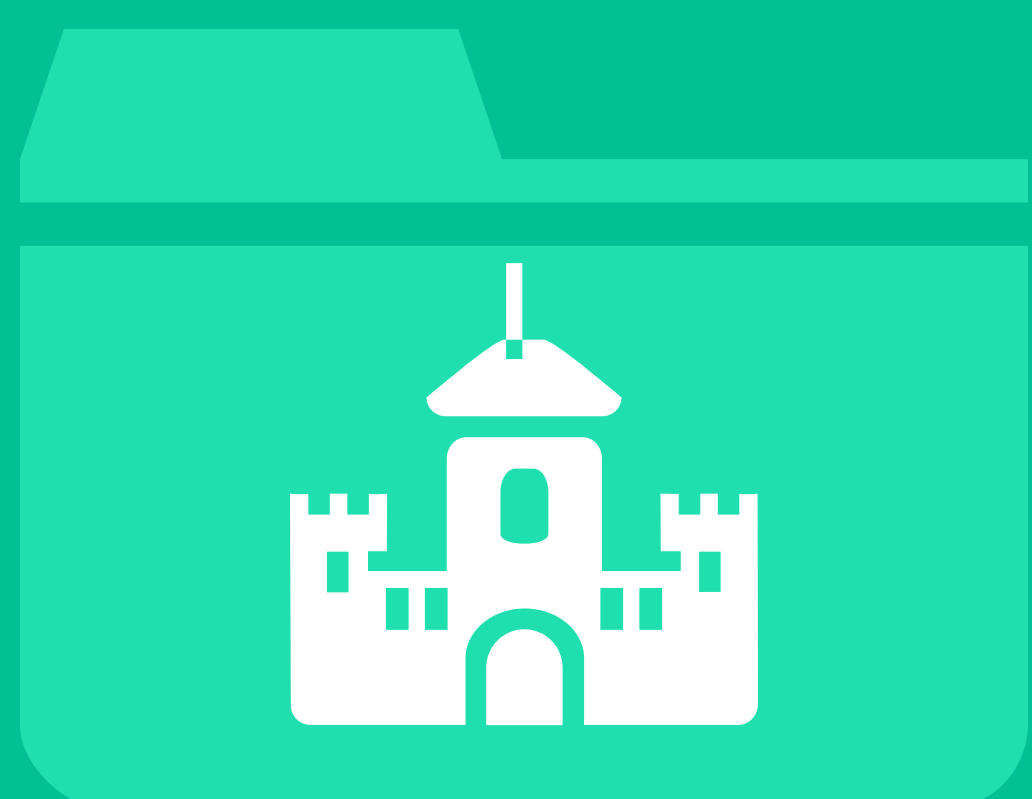
The Flood Team strives to use innovative methods to deliver flood management projects, such as within the Leck catchment. This incorporates a series of 25 leaky dams to provide upstream storage for the village of Leckhampstead to help alleviate a recurrent flooding issue. It is hoped that the creation of the leaky dam network will not only decrease the rate of flow, but also provide new habitats for local fauna and flora and help manage sedimentation downstream.

REDUCING OUR IMPACT ON THE ENVIRONMENT

HISTORIC ENVIRONMENT



Our archaeologists ensure that the historic environment is taken into account in planning decisions county-wide, by advising the District and County planners on archaeology and overseeing all fieldwork (the Districts do not have their own archaeology function). We provide archaeological advice on approximately 600 consultations a year. We monitored approximately 70 archaeological fieldwork projects in 2019.



We hold and maintain all the historic environment records for Buckinghamshire, including information on monuments, listed buildings and designated and undesignated sites (HER).



Our archaeologists give talks to local communities and interest groups about their local heritage, helping them to care for their historic sites.



We invest in projects to better understand our historic environment and record previously unknown sites, for example LiDAR and aerial photograph analysis.



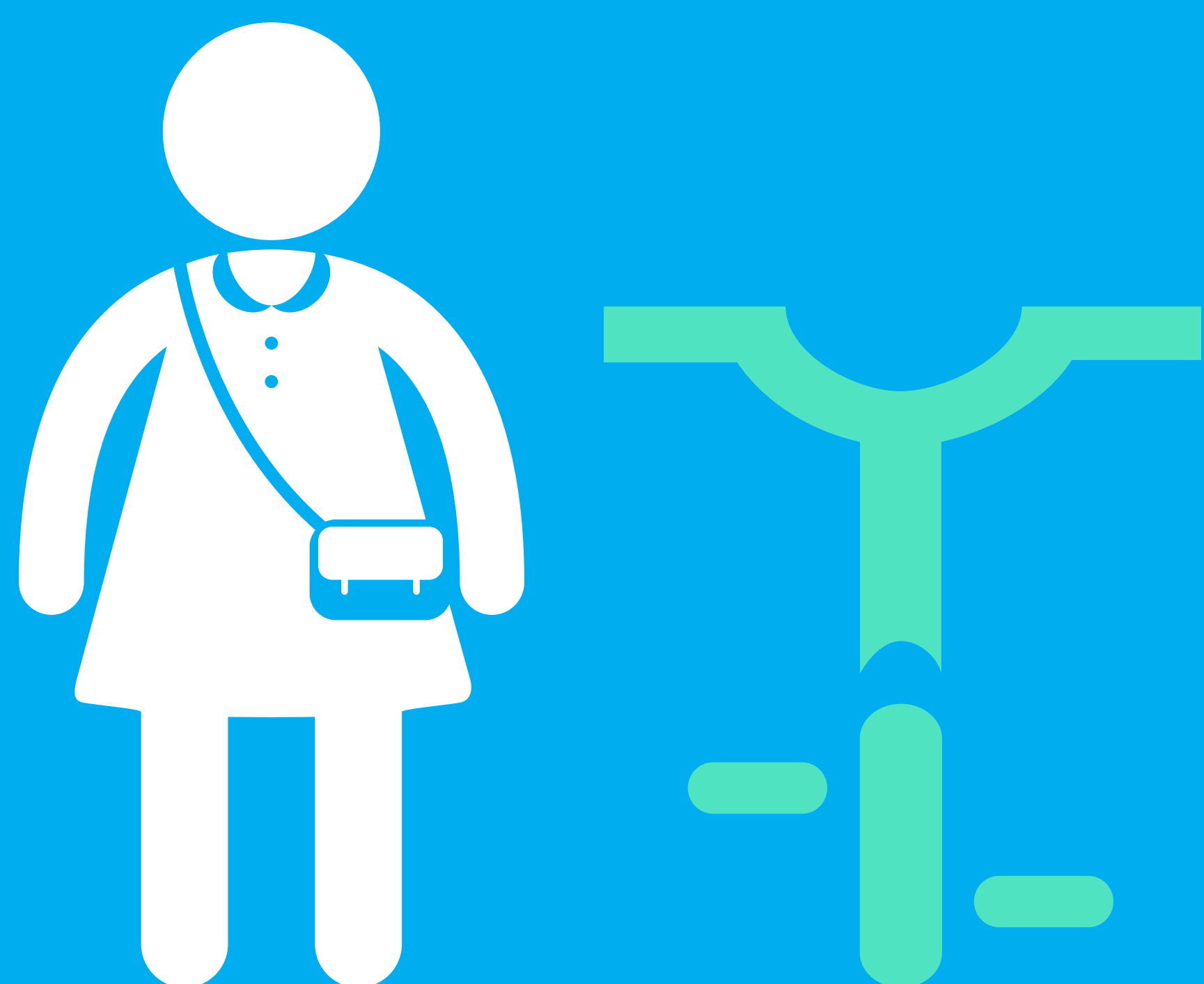
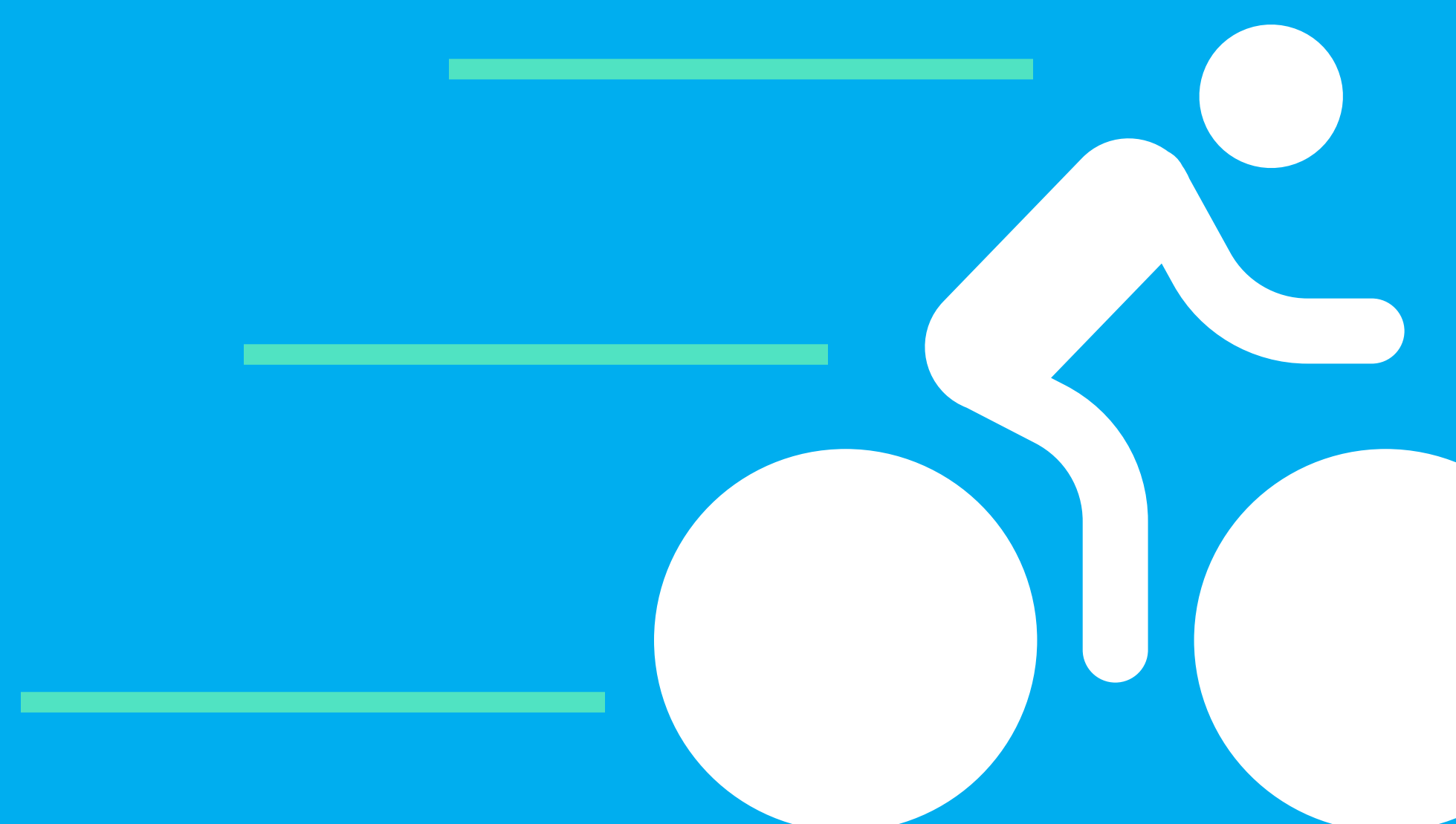
We work closely with the Buckinghamshire County Museum Trust to support their outreach programme, archiving and finds liaison work. We also provide advice and support in the event of unexpected archaeological discoveries.

ENCOURAGING SUSTAINABLE TRAVEL

Recent cycling and walking infrastructure schemes include the Winslow to Buckingham Cycleway, A4 Cycleway and Waddesdon Greenway.

Future aspirational schemes include the Buckinghamshire Greenway and Thame to Haddenham & Thame Parkway Station link.

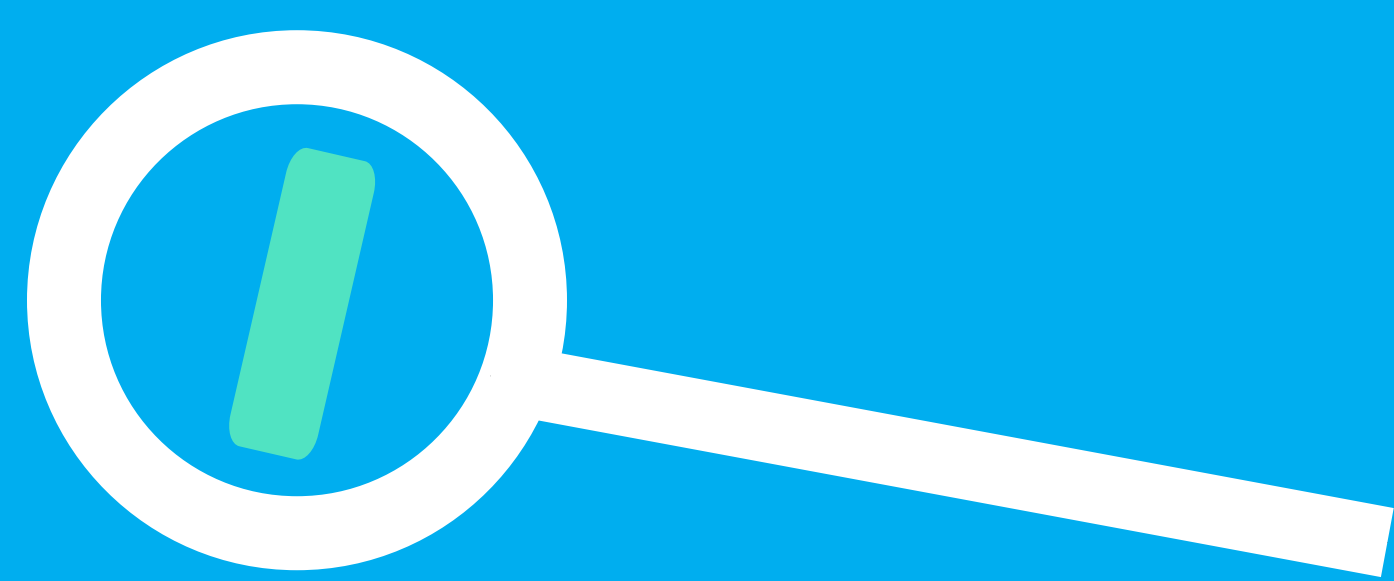
Working in partnership as part of Aylesbury Garden Town, we are developing schemes to encourage walking and cycling. A 'Local Cycling and Walking Infrastructure Plan' (LCWIP) is being developed, which will set a plan for new routes and priorities for investment. A LCWIP will also be developed for High Wycombe in the near future.



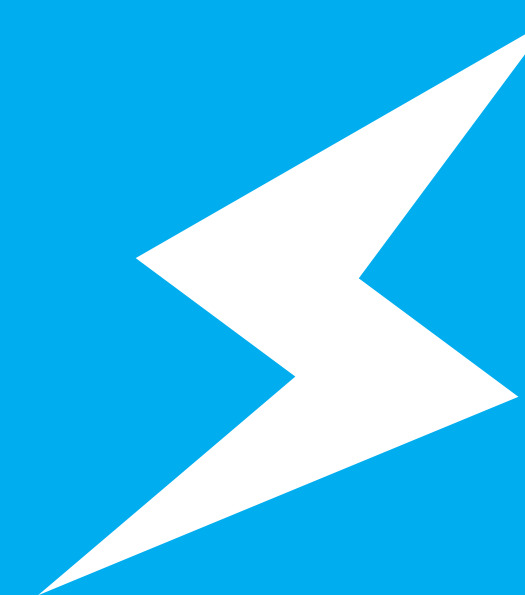
Buckinghamshire County Council works with schools across the county to develop School Travel Plans and encourage sustainable travel on the journey to school. This in turn helps reduce car use, congestion and associated air quality issues.

Bikeability Cycle Training – Government funding, secured by Buckinghamshire County Council, ensures that cycle training can be delivered to schools to help give children and parents the confidence to cycle to school.

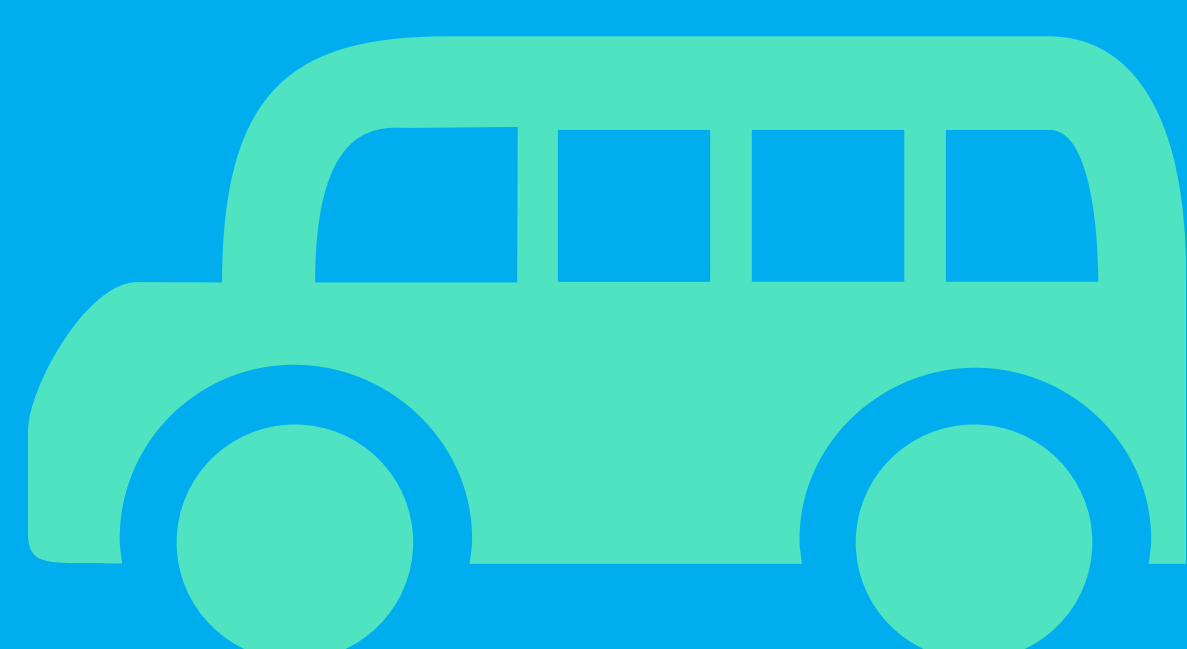
Go for Gold – Every time a child travels sustainably to school they receive a stamp. Once their passport is full they gain a free activity (e.g. swimming, bowling).



School Crossing Patrollers (SCPs) assist families in walking to school safely. Having SCPs encourages more families to walk to school, therefore reducing car use.



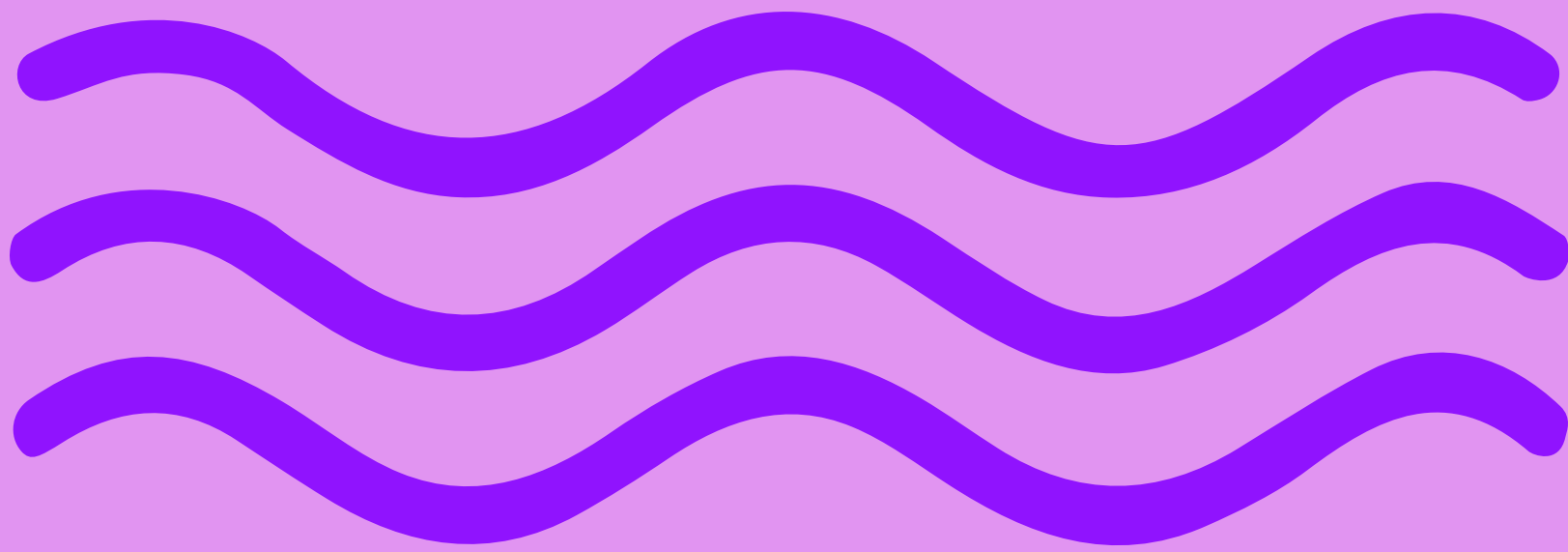
A total of 20 Electric Vehicle Charging points have been installed at various locations across the County as part of the Office for Low Emission Vehicles (OLEV) "On-Street Residential Charge Points Scheme".



The Park and Ride bus service runs 6 days a week from the Handy Cross Hub into High Wycombe, and carries over 2000 passengers per week. The Hub also services a number of regular long distance coach routes. The facility offers free parking, a waiting room, public transport information and electric Real Time Information displays.

POLICIES AND STRATEGIES

FLOOD



The Flood team produce the '**Strategic Flood Management Strategy**' as part of our role as Lead Flood Authority.

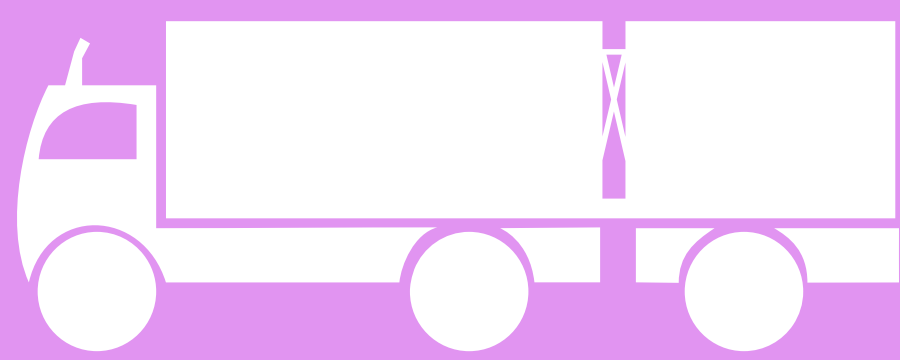
We are also developing a **culvert policy** which will prevent the unnecessary culverting of Buckinghamshire's ordinary watercourses, ensuring that natural water corridors are maintained.

TRANSPORT

Buckinghamshire's **Local Transport Plan 4 Policy 10** states:

"We will protect Buckinghamshire's unique countryside and other special environments, working with partners to manage air quality, take advantage of opportunities to encourage more sustainable travel choices and reduce noise pollution. We will do this through the transport investments we promote, by managing the impact of new development, by promoting the use of Travel Plans, and by working with business and researchers to develop lower emission technologies."

Strategies developed and supported to adopt this include:



Freight Strategy (2018) – ensuring appropriate routing for HGVs through the county, minimising the impacts of freight and promoting low emissions.



Getting to School Strategy (2018) – promoting sustainable travel to school, reducing car use and associated emissions.



The **Rights of Way Improvement Plan** has been updated with a formal public consultation on the draft plan taking place at the end of 2019. The updated plan will be published in early 2020.



Area-based Transport Strategies (i.e. Aylesbury, Buckingham and High Wycombe) which promote sustainable travel options and encourage a 'place-based approach' to transport planning, i.e. creating environments people want to spend time in, rather than move through. These are supported by Local Cycling and Walking Infrastructure Plans which are in development for Aylesbury and High Wycombe.

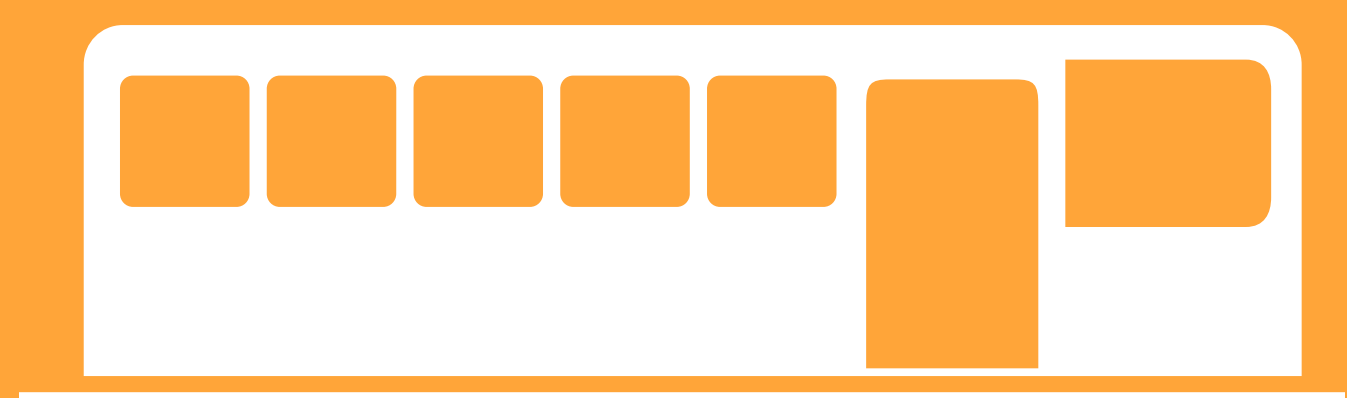


We are in the process of developing a county **Low Emission Strategy** which will include actions to reduce emissions across our vehicle fleet and promote the uptake of electric vehicles. It will also include a Future Mobility Roadmap, which includes actions to promote electric vehicles and smart traffic signals that will divert traffic away from congestion hotspots amongst other things.

ENABLING SUSTAINABLE DEVELOPMENT



Heathrow Expansion – key work streams include: improving air quality, ensuring the installation of green ‘multiuse infrastructure’ (i.e. green routes with cycle ways) and working to ensure there will be no increase in traffic.



Buckinghamshire County Council supports East West Rail (and are part of the consortium delivering the project). This new rail link to Milton Keynes and beyond will enable more people to travel sustainably, reducing emissions whilst at the same time delivering net biodiversity gain.



As outlined in the Highways DM Guidance, Buckinghamshire County Council sets a series of standards for developers looking to build in Buckinghamshire. All developments in Buckinghamshire should be well connected and with a variety of transport methods available, including walking, cycling and public transport. Some of the standards include:

- Encouraging the use of environmentally and socially suitable design, materials and construction methods, e.g. permeable paving
- Encouraging walking and cycling by providing appropriate infrastructure, prioritising the access needs of all kinds of sustainable transport, safeguarding the Rights of Way network and creating new rights of way to improve connections
- Encouraging the creation of Electric Vehicle Charging points.
- Securing monies or commitments to highways works to improve walking, cycling and public transport routes
- Requiring the production of Travel Plans

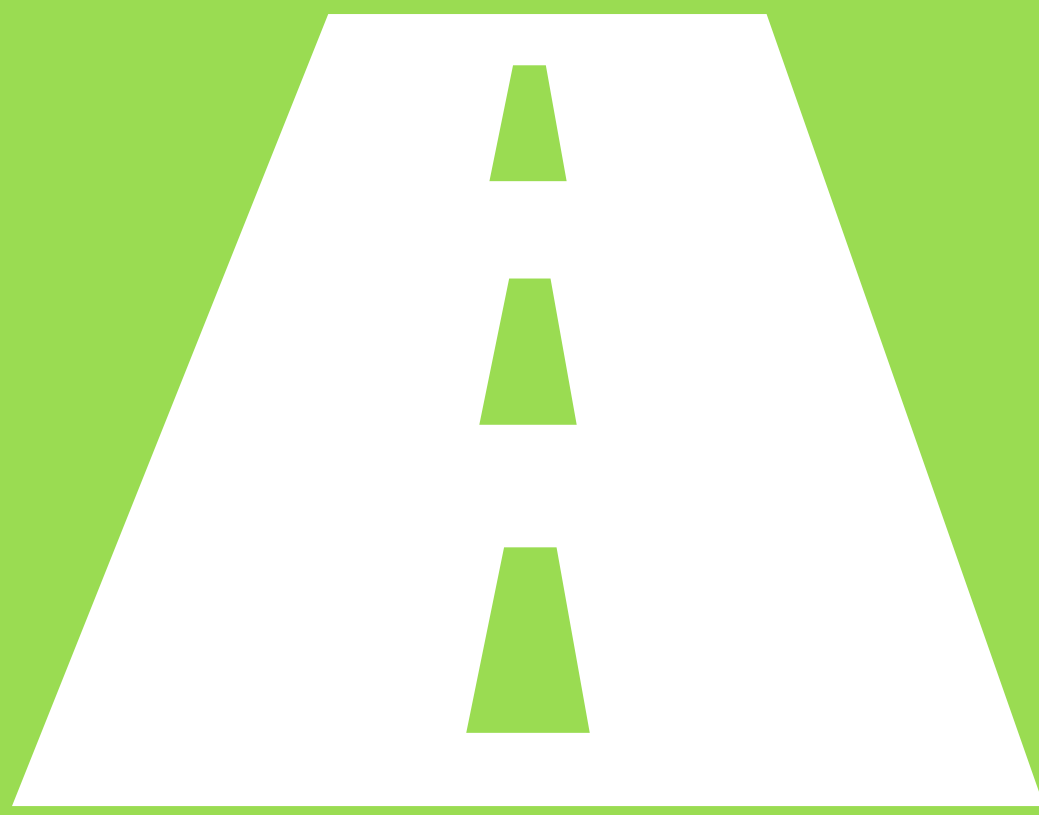


Highways DM may recommend refusal for planning applications that are unacceptable in transport terms.



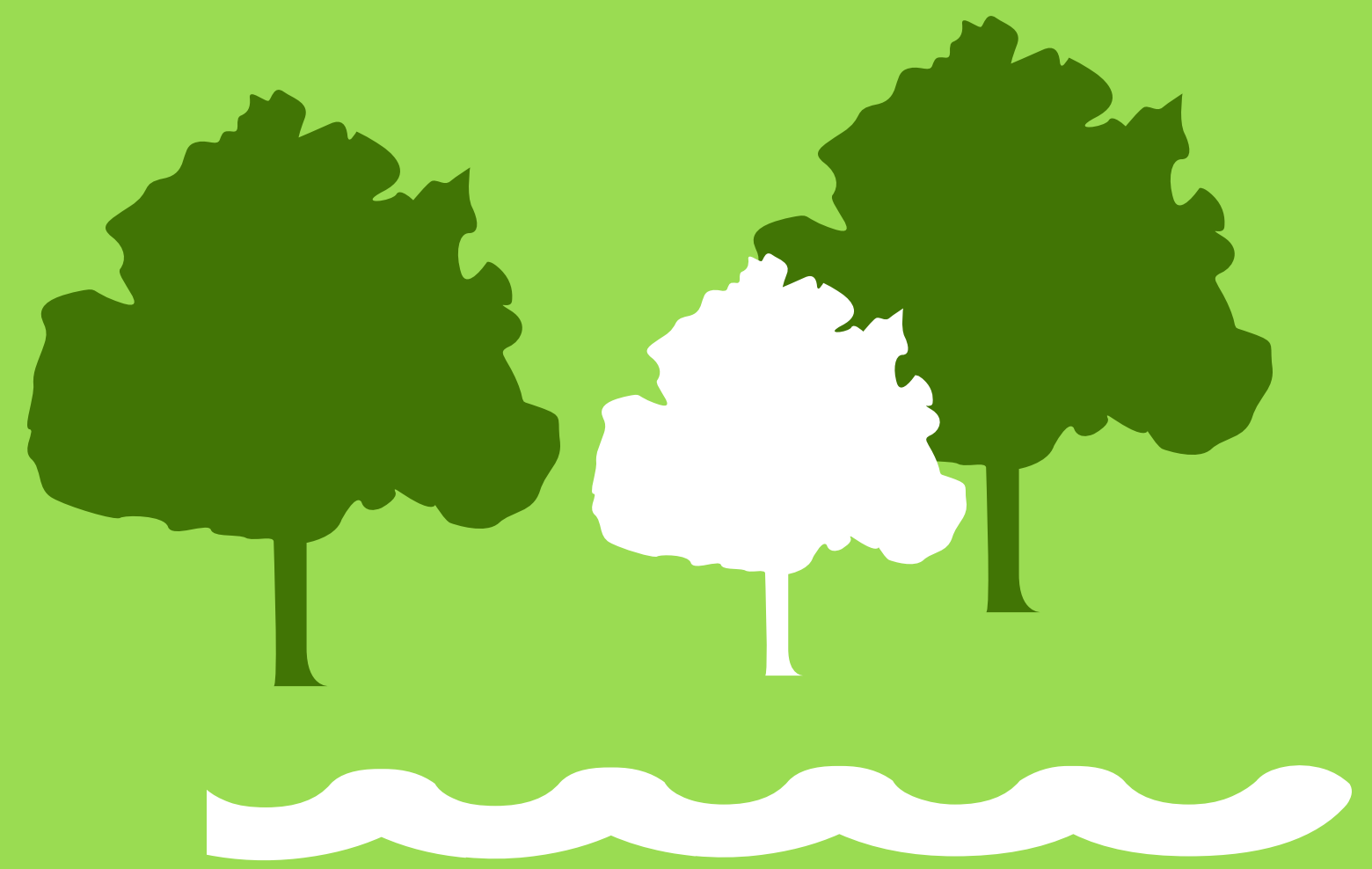
The Strategic Flood Management Team produce guidance for developers to ensure sustainable drainage systems are incorporated into development proposals and are acceptable from a flooding risk perspective.

LEVERAGING FUNDS



Our recent bid into the Housing Infrastructure Fund for Forward Funding, if successful, will help to enable to progression of a link road network around Aylesbury. This will reduce congestion and improve air quality across the town, particularly in the town centre, and will also provide new cycling and walking links.

The Flood team are identifying opportunities to lever in funding from major infrastructure projects to deliver flood management projects. The benefit being to reduce local flood risk while enhancing our environment with natural flood mitigation within a blue-green infrastructure network.



Buckinghamshire County Council
Walton Street
Aylesbury
HP20 1UA

